

Gastroenterology and Hepatology Research Newsletter

Spring 2025 Newsletter

Welcome to the TPMG **Gastroenterology and Hepatology Research Newsletter!**

Here, we present current or recently completed research projects led by the TPMG GI/Liver researchers as well as ongoing studies led by investigators at the Division of Research (DOR) that involve our GI/Liver clinician researchers and our outstanding GI fellows.

Conducting research to improve care is important to many TPMG clinicians. The Delivery Science and Applied Research (DARE) program is proud to provide our physicians with research collaboration opportunities through several [DARE funding mechanisms](#).

In this issue, we provide you a list of the recently published articles by the TPMG GI/Liver clinician researchers.



A Deeper Look Inside This Update:

- Research Highlight
- Upcoming Events
& Funding
- GI Fellows Corner
- Active and Recent Research projects
- Recent Peer Reviewed Publications

Research Highlight:

Annals of Internal Medicine

ORIGINAL RESEARCH

Colorectal Cancer Screening Completion and Yield in Patients Aged 45 to 50 Years

An Observational Study

Theodore R. Levin, MD^{*}; Christopher D. Jensen, PhD, MPH^{*}; Natalia Udaltsova, PhD; Andrea A. Burnett-Hartman, PhD; Aruna Kamineni, PhD, MPH; Chun R. Chao, PhD; Joanne E. Schottinger, MD; Nirupa R. Ghai, PhD, MPH; Gaia Pocobelli, PhD; Larissa L. White, PhD; Malia Oliver, BA; Hina Chowdhry, MPH; Brian P. Hixon, MS; Jessica M. Badalov, MS, RD; Shauna R. Goldberg, MPH; Susan C. Bradford, MS; Charles P. Quesenberry, PhD; and Jeffrey K. Lee, MD, MPH

Background: Guidelines now recommend initiating colorectal cancer (CRC) screening at age 45 years rather than 50 years, but little is known about screening completion and yield among people aged 45 to 49 years.

Objective: To evaluate fecal immunochemical test (FIT) completion and yield in patients aged 45 to 49 versus 50 years.

Design: Retrospective cohort study.

Setting: Kaiser Permanente Northern California, Washington, and Colorado.

Patients: Those distributed a FIT kit during January to September 2022.

Measurements: FIT completion within 3 months, FIT positivity, receipt of colonoscopy within 3 months after a positive FIT result, and colonoscopy yield.

Results: A total of 267 732 FIT kits were distributed: 213 928 (79.9%) to patients aged 45 to 49 years, and 53 804 (20.1%) to those aged 50 years. Overall, FIT completion was slightly higher in patients aged 45 to 49 years (38.9% vs. 37.5%; adjusted risk ratio [aRR], 1.05 [95% CI, 1.04 to 1.06]), although at Colorado, those aged 45 to 49 years were substantially less

likely to complete a FIT (30.7% vs. 40.2%; aRR, 0.77 [CI, 0.73 to 0.80]). Overall, FIT positivity was lower in patients aged 45 to 49 years (3.6% vs. 4.0%; aRR, 0.91 [CI, 0.84 to 0.98]), and receipt of colonoscopy after a positive FIT result was similar between groups (64.9% vs. 67.4%; aRR, 1.00 [CI, 0.94 to 1.05]). Adenoma detection was lower in the younger group (58.8% vs. 67.7%; aRR, 0.88 [CI, 0.83 to 0.95]). Yields were similar for adenoma with advanced histology (13.2% vs. 15.9%; aRR, 0.86 [CI, 0.69 to 1.07]), polyp with high-grade dysplasia (3.4% vs. 5.1%; aRR, 0.68 [CI, 0.44 to 1.04]), sessile serrated lesion (10.3% vs. 11.7%; aRR, 0.92 [CI, 0.71 to 1.21]), and CRC (2.8% vs. 2.7%; aRR, 1.10 [CI, 0.62 to 1.96]).

Limitation: The small number of neoplasia events contributed to wide CIs.

Conclusion: Similar FIT completion and yield rates in people aged 45 to 50 years support initiation of CRC screening at age 45 years.

Primary Funding Source: Kaiser Permanente Sidney R. Garfield Memorial Fund.

Ann Intern Med. 2024;177:1621-1629. doi:10.7326/M24-0743

For author, article, and disclosure information, see end of text.

This article was published at Annals.org on 22 October 2024.

^{*} Drs. Levin and Jensen are co-first authors.

Upcoming Events

Digestive Disease Week

Dates: May 3-6, 2025

Location: San Diego, CA

For more information: www.ddw.org

Northern California Society for Clinical Gastroenterology (NCSCG) 2025 Symposium

Dates: May 17-18, 2025

Location: Hyatt Regency, Monterey, CA

For more information:

<https://www.norcalgastro.org/gi-symposium>

ACG Annual Scientific Meeting 2025

Dates: October 24-29, 2025

Location: Phoenix Convention Center, Phoenix, Arizona

For more information:

www.acgmeetings.gi.org

The Liver Meeting

Dates: November 11-17, 2025

Location: Washington, DC

For more information: www.aasld.org

Internal Funding & Research Resources



General Funding Opportunities



Delivery Science and Applied Research



Specialty Research Networks



Getting Started with Research



Division of Research



Delivery Science
and Applied Research

The Permanente Medical Group

GI Fellows Corner

Third Year Fellows

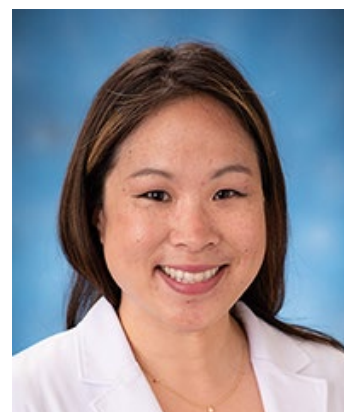


Lawrence Leung MD, MPH

I was born and raised in the SF Bay Area and completed my undergraduate degree at UC Berkeley. I then served an AmeriCorps term focused on disaster preparedness in disadvantaged communities in the Bay Area. Subsequently, I returned to UC Berkeley for my MPH prior to moving east for medical school at the University of Vermont. I returned to the SF community to complete my internal medicine residency and gastroenterology fellowship here at KPSF. My clinical interests include luminal GI (particularly CRC screening and complex polyp resection), pancreaticobiliary endoscopy, and technology and innovation.

Marcia Leung, MD

I was born and raised in Ewa Beach, Hawaii and completed my undergraduate studies at Santa Clara University where I majored in Bioengineering. I then completed my residency at UC Davis where my research interests were in establishing referral pathways for NASH patients and quality improvement in inpatient management of cirrhosis patients. My research has been published in the *Journal of Hepatology*. My current clinical interests are in general gastroenterology and hepatology, and my current research is focused on validating Baveno VI criteria in the KP population.



Second Year Fellows



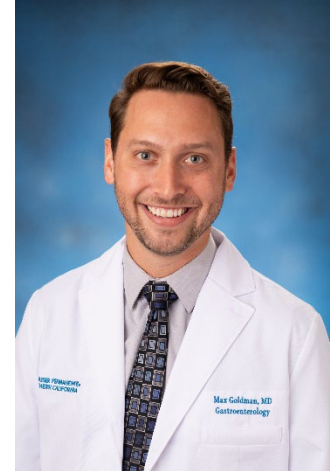
Brenton Davis, MD

I was born in Alabama and raised in South Carolina and being from a military family have lived all over the south from El Paso, TX to Silver Springs, MD. For education I went to Clemson University for college, Medical University of South Carolina for medical school where I met my fiancée Olivia, and UCSF for residency. I'm very fortunate and happy to complete my GI training at Kaiser which has a wide breadth of patients and pathology. My clinical interests include advanced endoscopy procedures related to cancer and obesity as well as improving procedural safety and device development. Currently I am researching if combining procedures for individuals with pancreatic cancer helps reduce time

to treatment. For fun I love to snowboard with Olivia in South Lake Tahoe and Whistler British Columbia; Europe and Japan are next!

Max Goldman, MD

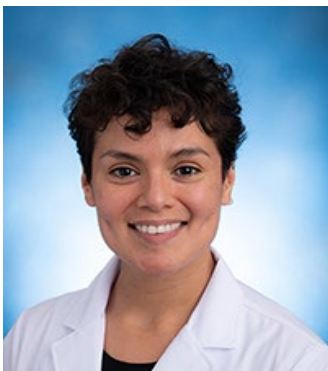
I was born and raised in Atlanta, Georgia and completed my undergraduate degree at Emory University. After college, I completed my Fulbright Fellowship in the rural village of Jorakhe, Thailand for nearly 1.5 years, before returning to Emory University for medical school, while I was awarded the four-year Woodruff Fellowship in Medicine. I moved to the Bay Area for my internal medicine residency at the University of California, San Francisco (UCSF). After residency, I was appointed and continue to serve as an Assistant Professor of Medicine at UCSF. I spent two years working as a hospitalist at UCSF and the San Francisco VA, where I served as the Lean Six Sigma Project Lead on a number of systemwide quality improvement initiatives and as the Director of Patient Flow Operations. I am overjoyed to now be a member of the Kaiser Permanente family as a Northern California gastroenterology fellow.



I have a strong academic interest in improving care delivery to our patients both through my work in quality improvement and my clinical outcomes research. My research has focused on methods of early detection of advanced hepatic fibrosis in high-risk MASLD patients, in order to stave off progression to cirrhosis, and investigating factors affecting survival and recurrence in hepatocellular carcinoma. I have had commentaries and manuscripts published in the *New England Journal of Medicine*, *Liver Transplantation*, *Digestive Diseases and Sciences*, *Hepatology Communications*, and the *American Journal of Medicine*. My current clinical interests are in general gastroenterology and hepatology. I enjoy spending my free time in the great Northern California outdoors through camping, hiking, backpacking, and kayaking.

First Year Fellows

Sheyla Medina, MD



Originally from Peru, Sheyla is interested in medical humanities, medical education and addressing health disparities within GI and hepatology. At the University of Pennsylvania, she completed undergraduate studies in public health and nutrition and, during this period, also completed a public policy summer fellowship at Princeton University. After earning her B.A., Sheyla worked in health services research and program management in Philadelphia, Senegal and southeast Asia. Inspired by her public health work, she pursued a post-baccalaureate premedical program at Goucher

College and medical studies at the Warren Alpert Medical School of Brown University in 2020. She completed the UCSF Internal Medicine categorical residency program and complemented her passion for teaching with leadership in medical education as Chief Resident at the San Francisco Veterans Affairs Medical Center (VAMC). Sheyla looks forward to learning from the KP GI team!

Allison Ibarra MD

I'm originally from Chino Hills in Southern California but have fallen in love with the bay area. I completed my undergraduate degree in biological sciences at UC Riverside. Afterwards, I volunteered for a year as a health coach for patients with diabetes at Riverside Community Hospital. I then moved to the Bay area for medical school at UCSF. I completed residency at UC San Diego and stayed for a fourth year as a Chief Resident. During my time at UCSD I created the RainbowMed+ program which focuses on lgbtqia+ teaching and mentorship in UGME and GME programs. We created a community for all UGME/GME members, an internal medicine mentorship program, and an LGBTQIA+ elective. I also completed a 2-year integrative medicine tract at UCSD. I have continued my interests in integrative medicine and working with the LGBTQIA+ community into fellowship. My research interests include finding ways to improve care delivery to the LGBTQIA+ community. As well as the intersections of integrative medicine, mental health, and IBD. In my free time I enjoy trying out new foods, hiking, and spending time with my cavapoo Tulio.



Announcements

From Doug Corley, MD, PhD – Chief Research Officer TPMG

We are very pleased to announce the clinician-investigators selected for the fourth TPMG [Physician Researcher Program](#) cohort. This effort, thanks to TPMG's support of its Delivery Science and Applied Research program ([DARE](#)), provides sustained support for a community of physician clinician researchers who inform evidence-based improvements in clinical care and help support the development of clinician-investigator communities/networks in their specialties. They are replacing existing highly successful clinician-innovators who are graduating from the program.

The current thirteen physician researchers in the [TPMG Physician Researcher Program](#) are providing evidence for care changes across multiple topics, including pulmonary embolism, ovarian cysts, colorectal cancer surveillance, aortic stenosis, carotid vascular disease, breast cancer surveillance, risk-based population care, novel

behavioral health strategies, stroke, prostate cancer screening, management of complex infectious diseases, congestive heart failure, and mental health treatment strategies. Through engagement with national specialty societies and Kaiser Permanente consensus panels, they have:

- **Changed national guidelines** that inform best-practice, evidence-based management of strokes, adnexal masses, colon polyp surveillance, pulmonary embolism, and many other conditions.
- **Authored approximately more than 400 publications** since starting with the program in 2017 (cohort 1), 2019 (cohort 2), and 2020 (cohort 3).
- **Created/supported new regional specialty research groups**, to support [new clinician-investigators](#) with community and to answer actionable clinical questions.

For the new cohort, almost 50 excellent clinician-investigators applied and six were ultimately selected by our regional executives and clinical specialty leads / able to be supported. Starting in August 2025, they will work together developing systematic evaluations of clinical care, facilitating the dissemination, and helping their specialties implement the resulting knowledge. They will collaborate with their specialty chief's groups and Associate Executive Directors, Division of Research scientists, Delivery Science and Applied Research program team members, and the existing physicians in the Physician Researcher Program.

Congratulations and please welcome:

- **Jason Balkman (Radiology/Emergency, San Leandro)** - Improving accuracy & communication, reducing critical errors, and decreasing effort in radiology reports using large language models
- **Lisa Gilliam (Endocrinology, So San Francisco)** - Development and evaluation of continuous glucose monitoring (CGM)-based decision support for Type 2 DM
- **Fernando Velayos (Gastroenterology, San Francisco)** - Appropriate biosimilar medication use strategies in inflammatory bowel disease and extrapolations to similar pharmacy-supported programs
- **Edward Yap (Anesthesiology, So San Francisco)** - Anesthesia management strategies and outcomes in the senior surgical program
- **Jonathan Liang (Head and Neck Surgery, Oakland)** - Evaluating and testing chronic rhinosinusitis management strategies including biologics
- **Dustin Ballard (Emergency, San Rafael)** - Incorporating emergency medical services (EMS) data into emergency department (ED) risk stratification

Active Research Projects and Collaborations

An Organized Hepatitis B Surveillance Program increases Patient Identification and Optimizes Management

Krisna Chai, Joanna Ready, Andy Avins | RAU | Ongoing

Assessing the effect of a reduction in endoscopic clip usage during outpatient colonoscopy on post-colonoscopy bleeding and post-colonoscopy perforation

Gene Ma, Julie Schmittiel | Rapid Analytics Unit |

Colorectal cancer screening decisions based on predicted risk: the PREcision ScreENing randomized controlled Trial (PRESENT)

Jeff Lee | NCI | Ongoing

Colorectal Cancer Screening Uptake and Yield After Recent Guideline Changes to Lower the Age of Screening Initiation (CRC CH)

Jeff Lee | Community Health | Ongoing

Comprehensive Colorectal Cancer Risk Prediction To Inform Personalized Screening

Doug Corley, Jeff Lee | NCI | Ongoing

Contemporary Probability of Occult Colorectal Cancer in Patients with Colitis-Related Dysplasia undergoing Colectomy

Fernando Velayos | Other | Ongoing

COVID-19 Pandemic: Impact on Colorectal Cancer Screening and Adenoma Surveillance Outcomes (PICASO)

Theodore Levin | Other | Ongoing

Crossing the Quality Chasm for Men Under 50 (CQCMU50)

Theodore Levin | PRP | Ongoing

De-implementation of Outdated Colonoscopy Surveillance Interval Recommendations Among Patients with Low-risk Adenomas (DESIRE)

T.R. Levin, Jeffrey Fox, Jeffrey Lee | DSGP | Ongoing

Effectiveness of Screening for Colorectal Cancer in Average Risk Adults: Colonoscopy vs. FIT (SCOLAR2)

Doug Corley, T.R. Levin | NCI | Ongoing

Evaluating the De-Implementation of Outdated Colonoscopy Surveillance Intervals in Patients with Low-risk Adenomas Regionwide (DESIRE 2)

Jeff Lee, Jeffrey Fox | Delivery Science Grants Program | Ongoing

Hepatocellular Carcinoma Biomarker Study with Glycotest®

Varun Saxena | Other | Ongoing

Improving health outcomes and reducing healthcare costs in individuals with *Helicobacter pylori* infection in a large, community-based population

Dan Li | PRP | Ongoing

Incidence and predictors of hospital readmission for ulcerative colitis

Abhik Roy | CH | Ongoing

International Travel for Liver and/or Kidney Transplantation

Joanna Ready | Other | Ongoing

Is KP's integrated care setting a "blue zone" for better health and lower mortality: a comparison of predicted mortality and preventable causes of death

Doug Corley | Rapid Analytics Unit | Ongoing

K Award

Jeff Lee | NCI | Ongoing

Optimizing Colorectal Cancer Screening PREcision and Outcomes in Community-baSEd Populations (PRECISE)

Doug Corley, T.R. Levin | NCI | Ongoing

Phase III, randomized, double blind, parallel group, placebo controlled, multicentre study to assess efficacy & safety to adult allogeneic expanded adipose-derived stem cells (eASCs) for treatment of complex perianal fistulising Crohn's disease

Fernando Velayos | Other | Ongoing

PICASO study of pandemic related impact on colorectal cancer screening outcomes

TR Levin | Other | Ongoing

PREDICT PCCC: PREDICTing Post Colonoscopy Colorectal Cancer

T.R. Levin, Jeffrey Lee, Vincent Liu, Charles Quesenberry, Oleg Sofrygin | PRP | Ongoing

PREDICT: Predicting advanced neoplasia on surveillance colonoscopy

TR Levin | Other | Ongoing

Predicting Serious Colonic Growths to Risk Stratify People Coming Due for Surveillance Colonoscopy

TR Levin | PRP | Ongoing

Prednisone, but not biologics or immunomodulators are associated with severe COVID-19 outcomes: A community-based study

Fernando Velayos, Jennifer Dusendang, Julie Schmittiel | Other | Ongoing

PREEMPT CRC screening trial. Multicenter study of a multi-omics based blood based screening test

TR Levin, Aasma Shaukat | Industry | Ongoing

Prior immunosuppressive therapy and severe illness among patients diagnosed with SARS-CoV-2: a community-based study

Fernando Velayos | Other | Ongoing

Reproductive Health Following Liver Transplant

Sreepriya Balasubramanian | Other | Ongoing

Retreatment of Hepatitis C Infection in Patients who Previously Failed Sofobuvir/Velpatasvir/Voxilpravir

Varun Saxena | Other | Ongoing

Retrospective Validation of MeScore for Identification of Colorectal Cancer (CRC)

Doug Corley, T.R. Levin | Industry | Ongoing

Sarcopenia and Frailty Among Liver Transplant Recipients

Sreepriya Balasubramanian | Other | Ongoing

SARS-CoV-2 Serological Antibody Testing for Disease Surveillance and Clinical Use

Jacek Skarbinski, Larry Kushi, Douglas Corley | NIH | Ongoing

System-Level Capture of Family History Data to Assess Risk of Cancer and Provide Longitudinal Care Coordination

Doug Corley | PCORI | Ongoing

The incidence of esophageal food impaction and risk factors for recurrence in a large, community-based healthcare system in Northern California

Angela Lam | Community Health | Ongoing

Understanding the Risk of Advanced Colorectal Neoplasia in Patients with 3-4 Non-advanced Adenomas Compared to Those with 1-2 Non-advanced Adenomas

Jeff Lee, Theodore Levin | DSGP | Ongoing

Volumetric Lase Endomicroscopy in dysplastic Barrett's esophagus: Can we see the invisible lesions?

Ben Hassid | Other | Ongoing

Recent Peer Reviewed Gastroenterology/Liver - Authored Publications in 2024

Optimal Stopping Ages for Colorectal Cancer Screening [PubMed abstract](#) | Corley, Douglas A; Jensen, Christopher D; Udaltsova, Natalia | JAMA Network Open | December 2, 2024 |

Extended Monitoring for Transition to Oral Corticosteroids in Acute Severe Ulcerative Colitis May Be Unnecessarily Prolonging Length of Stay [PubMed abstract](#) | Velayos, Fernando | Digestive Diseases And Sciences | December 1, 2024 |

Incidence of serious complications following screening colonoscopy in adults aged 76 to 85 years old [PubMed abstract](#) | Corley, Douglas A; Jensen, Christopher D; Lee, Jeffrey K; Levin, Theodore R; Merchant, Sophie A | Cancer Epidemiology, Biomarkers & Prevention : A Publication Of The American Association For Cancer Research, Cosponsored By The American Society Of Preventive Oncology | November 25, 2024

Barriers and facilitators to high-volume evidence-based innovation and implementation in a large, community-based learning health system [PubMed abstract](#) | Durojaiye, Cimone E L; Lee, Kristine L; Rouillard, Smita S; Corley, Douglas A; Lieu, Tracy A; Prausnitz, Stephanie; Schmittiel, Julie A; Schneider, Jennifer L | BMC Health Services Research | November 21, 2024

IFNL4 Genotype and Other Personal Characteristics to Predict Response to 8-Week Sofosbuvir-Based Treatment for Chronic Hepatitis C [PubMed abstract](#) | Lai, Jennifer; Saxena, Varun; Witt, David J | The Journal Of Infection | November 1, 2024 |

Unraveling the genetic landscape of susceptibility to multiple primary cancers [PubMed abstract](#) | Zhang, Jie; Alexeeff, Stacey; Corley, Douglas A; Graff, Rebecca E; Habel, Laurel A; Kushi, Larry; Sakoda, Lori C; Van Den Eeden, Stephen | Medrxiv : The Preprint Server For Health Sciences | October 30, 2024

Colorectal Cancer Screening Completion and Yield in Patients Aged 45 to 50 Years : An Observational Study [PubMed abstract](#) | Badalov, Jessica M; Jensen, Christopher D; Lee, Jeffrey K; Levin, Theodore R; Quesenberry, Charles P; Udaltsova, Natalia | Annals Of Internal Medicine | October 22, 2024

The Impact of Hormone Therapy on Inflammatory Bowel Disease in Transgender and Nonbinary Individuals [PubMed abstract](#) | Truta, Brindusa | Inflammatory Bowel Diseases | October 16, 2024 |

A chronic hepatitis B identification and surveillance program improves care in an integrated health plan [PubMed abstract](#) | Chai, Krisna P; Ready, Joanna B; Avins, Andrew L; Horton, Brandon H; Saxena, Varun; Sedki, Mai | The American Journal Of Gastroenterology | October 4, 2024

Oral Antibiotic Use in Adulthood and Risk of Early-Onset Colorectal Cancer: A Case-Control Study Koripella, Pradeep C; Corley, Douglas A; Dong, Huiyun; Jensen, Christopher D; Lee, Jeffrey K; Merchant, Sophie A; Yang, Jingrong | Clinical Gastroenterology And Hepatology : The Official Clinical Practice Journal Of The American Gastroenterological Association | October 3, 2024 | [PubMed abstract](#)

Shot Heard Around the world? Subcutaneous Infliximab as Maintenance Therapy for Inflammatory Bowel Disease | [PubMed abstract](#) Velayos, Fernando | Gastroenterology | October 1, 2024 |

Opioid Use and Outcomes in Patients Hospitalized With Acute Severe Ulcerative Colitis | [PubMed abstract](#) Velayos, Fernando | Inflammatory Bowel Diseases | September 18, 2024

Survival Outcomes Among Patients With Hepatocellular Carcinoma in a Large Integrated US Health System | [PubMed abstract](#) Lee, Jeffrey K; Mukhtar, Nizar; Saxena, Varun; Tucker, Lue-Yen S; Xu, Richie Houhong | JAMA Network Open | September 3, 2024

Risk of Gastric and Small Intestinal Cancer in Patients With Lynch Syndrome: Data From a Large, Community-Based US Population | [PubMed abstract](#) Carwana, Holly E; Lin, Christina F; Jiang, Sheng-Fang; Li, Dan | Clinical And Translational Gastroenterology | September 1, 2024

Validation of Quality Assessment Measures for Inpatient Gastroenterology Consults on Oncologic Patients in Non-teaching Services at a Cancer Center: A Cross-Sectional Study | [PubMed abstract](#) Lin, James; Lee, Jeffrey K | Digestive Diseases And Sciences | September 1, 2024

Quality indicators for colonoscopy | [PubMed abstract](#) Levin, Theodore R | Gastrointestinal Endoscopy | September 1, 2024

Cure models, survival probabilities, and solid organ transplantation for patients with colorectal cancer | [PubMed abstract](#) Corley, Douglas A | American Journal Of Transplantation : Official Journal Of The American Society Of Transplantation And The American Society Of Transplant Surgeons | August 23, 2024

Quality indicators for colonoscopy | [PubMed abstract](#) Levin, Theodore R | The American Journal Of Gastroenterology | August 21, 2024

Association between racial residential segregation and screening uptake for colorectal and cervical cancer among Black and White patients in five US health care systems | [PubMed abstract](#) Corley, Douglas A | Cancer | August 9, 2024 |

An independent panel should evaluate the health of presidential candidates | [PubMed abstract](#) Hoda, Kaveh | BMJ (Clinical Research Ed.) | August 2, 2024 |

Systematic review: risk prediction models for metachronous advanced colorectal neoplasia after polypectomy [[PubMed abstract](#)] Lee, Jeffrey K | Journal Of Gastroenterology And Hepatology | July 30, 2024

Hepatocellular Carcinoma in Metabolic Dysfunction-Associated Steatotic Liver Disease [[PubMed abstract](#)] Balasubramanian, Sripriya; Chai, Krisna P; MacDonald, Brock A; Levin, Theodore R; Liu, Liyan; Mukhtar, Nizar; Rodriguez, Luis A; Saxena, Varun; Schmittiel, Julie A | JAMA Network Open | July 1, 2024

Projected colorectal cancer incidence and mortality based on observed adherence to colonoscopy and sequential stool-based screening [[PubMed abstract](#)] Corley, Douglas A | The American Journal Of Gastroenterology | July 1, 2024

Fecal Immunochemical Test Screening and Risk of Colorectal Cancer Death [[PubMed abstract](#)] Corley, Douglas A; Jensen, Christopher D; Levin, Theodore R; Zhao, Wei K | JAMA Network Open | July 1, 2024 |

Risk of Gastric and Small Intestinal Cancer in Patients With Lynch syndrome - Data From a Large, Community-Based U.S. Population [[PubMed Abstract](#)] Carwana, Holly E; Jiang, Sheng-Fang; Li, Dan | 6/26/2024 | Clinical And Translational Gastroenterology

Randomized trial of patient outreach approaches to de-implement outdated colonoscopy surveillance intervals [[PubMed Abstract](#)] Boparai, Eshandeep S; Chang, Suyi; Dang, Christian H; Fox, Jeffrey M; Leung, Lawrence J; Badalov, Jessica M; Jensen, Christopher D; Lee, Jeffrey K; Levin, Theodore R; Merchant, Sophie A; Quesenberry, Charles P; Velayos, Fernando | 6/1/2024 | Clinical Gastroenterology And Hepatology : The Official Clinical Practice Journal Of The American Gastroenterological Association

Population-Level Identification of Patients With Lynch Syndrome for Clinical Care, Quality Improvement, and Research [[PubMed Abstract](#)] Corley, Douglas; Li, Dan; Udaltsova, Natalia | 6/1/2024 | Jco Clinical Cancer Informatics

A Response-able Diagnosis: Type 2 Autoimmune Pancreatitis in the Setting of Ulcerative Colitis [[PubMed Abstract](#)] Cherny, Sarah C; Karia, Kunal; Lee, Jeffrey K; Velayos, Fernando | 6/1/2024 | Digestive Diseases And Sciences

Patterns of Care Following a Positive Fecal Blood Test for Colorectal Cancer: A Mixed Methods Study [[PubMed Abstract](#)] Jensen, Christopher D; Levin, Theodore R | 5/21/2024 | Journal Of General Internal Medicine

Lead Time and Immortal Time Biases Impact the Calculation of Post-Colonoscopy Colorectal Cancer Survival [[PubMed Abstract](#)] Jensen, Christopher D; Lee, Jeffrey K; Merchant, Sophie A | 5/21/2024 | Clinical Gastroenterology And Hepatology : The Official Clinical Practice Journal Of The American Gastroenterological Association

Association of Ultra-Processed Food and Unprocessed or Minimally Processed Food Consumption With Bowel Habits Among US Adults [[PubMed Abstract](#)] Lee, Jeffrey K |

Colorectal Cancer Screening After Sequential Outreach Components in a Demographically Diverse Cohort [[PubMed Abstract](#)] Jensen, Christopher D; Levin, Theodore R; Zhao, Wei K | 4/1/2024 | JAMA Network Open

Surveillance Colonoscopy Findings in Older Adults With a History of Colorectal Adenomas [[PubMed Abstract](#)] Chan, Jennifer T; Jensen, Christopher D; Lee, Jeffrey K; Levin, Theodore R; Roy, Abhik; Udaltsova, Natalia; Zhao, Wei K | 4/1/2024 | JAMA Network Open

Screening for Colorectal Cancer in Asymptomatic Average-Risk Adults [[PubMed Abstract](#)] Levin, Theodore R | 4/1/2024 | Annals Of Internal Medicine

Cost-Effectiveness and the Economics of Genomic Testing and Molecularly Matched Therapies [[PubMed Abstract](#)] Banerjee, Sudeep | 4/1/2024 | Surgical Oncology Clinics Of North America

EUS-Guided Cholecystoduodenostomy for a Poor Surgical Candidate With Chronic Octreotide-Associated Gallstones From Metastatic Neuroendocrine Tumor [[PubMed Abstract](#)] Gupta, Suraj; Hamerski, Christopher M; Karia, Kunal; Leung, Lawrence J | 3/1/2024 | Acg Case Reports Journal

Predicting Risk of Colorectal Cancer After Adenoma Removal in a Large, Community-based Setting [[PubMed Abstract](#)] Jensen, Christopher D; Lee, Jeffrey K; Levin, Theodore R; Udaltsova, Natalia | 2/14/2024 | The American Journal Of Gastroenterology

Implementation of a hepatocellular carcinoma surveillance program in a community-based integrated health system in patients with hepatitis C cirrhosis [[PubMed Abstract](#)] Balasubramanian, Sripriya; Bui, Hien T; Mukhtar, Nizar; Saxena, Varun | 2/9/2024 | The American Journal Of Gastroenterology

Utility and impact of magnetic resonance elastography in the clinical course and management of chronic liver disease [[PubMed Abstract](#)] Patel, Roshan D | 1/20/2024 | Scientific Reports

Relative contribution of COVID-19 vaccination and SARS-CoV-2 infection to population-level seroprevalence of SARS-CoV-2 spike antibodies in a large integrated health system [[PubMed Abstract](#)] Schapiro, Jeffrey M; Amsden, Laura B; Chervo, Tyler C; Corley, Douglas; Elkin, Eric P; Ergas, Isaac J; Flores, Monica; Habel, Laurel; Hsiao, Crystal; Kushi, Larry; Munneke, Julie R; Nugent, Joshua R; Quesenberry, Charles P; Skarbinski, Jack; Valice, | 1/1/2024 | Plos One

Primary Care Utilization, Preventative Screening, and Control of Metabolic Syndrome in Metabolic Dysfunction-Associated Steatohepatitis Liver Transplant Recipients [[PubMed Abstract](#)] Saxena, Varun | 1/1/2024 | Journal Of Primary Care & Community Health

Helicobacter pylori-Induced Gastroduodenal Stricture in a Child [[PubMed Abstract](#)]

Chang, Albert J | 1/1/2024 | Acg Case Reports Journal