

Urology Research Newsletter

Spring 2025 Newsletter

Welcome to the TPMG **Urology Research Newsletter!**

It is exciting to see several more Urologists and Urologic Oncologists in KPNC have been successful in getting funding to pursue several areas of research including UTIs, stone disease, renal masses, prostate cancer, and bladder cancer. Much of this research is already being implemented in clinical care and is truly changing the way we practice!



A Deeper Look Inside This Update:

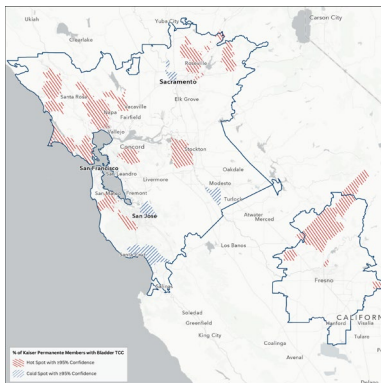
- Research Highlight
- Upcoming events
& funding
- Specialty Announcements
- Active and recent research projects
- Recent peer reviewed publications

Research Highlight:

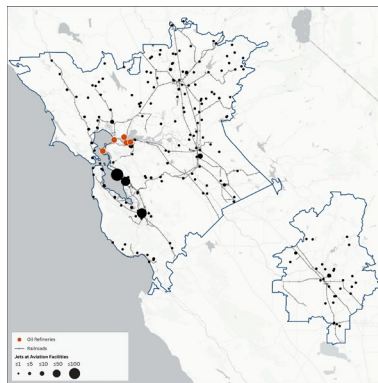
Relationship of Environmental Exposures and Spatial Clusters with Transitional Cell Carcinoma – Jay Belani

Congratulations to Jay Belani, who had a podium presentation at the National AUA Meeting in Las Vegas on April 28. As seen below, TCC hot spots with higher rates of bladder cancer than expected (red spots left figure) are geographically located near oil refineries/rail yards (center figure) and higher traffic density (right figure).

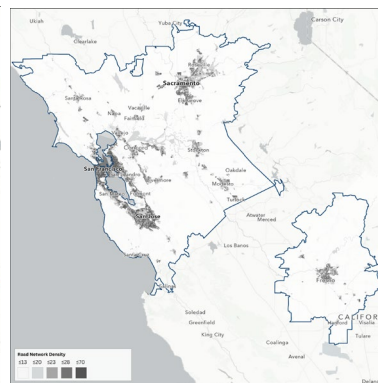
Hot spots



Oil Refineries/Rail Yards



Traffic Density



Congratulations to Andrea Harzstark and team, who have recently implemented a Bladder Cancer Review Panel for patients with localized muscle invasive bladder cancer. This was funded through the Delivery Science Program in partnership with Marilyn Kwan and team in the Division of Research. The panel is modelled after the successful Testicular Cancer Review Panel. The team also includes Pauline Filippou, Megan Matrenec, Joanna Eldredge, Jason Frankel and Joe Presti. The objective is to deliver an efficient guideline-based care plan with coordinated transition between therapies and departments using the 4R Oncology® model. The goals are to shorten the time to neoadjuvant chemotherapy and to consolidate cystectomies to high volume urologists.

Here are the open clinical trials in GU Oncology: S1802, NRG GU 009, 010 and 013, MK5684-004.

<http://dms.kp.org/docushare/dsweb/View/Collection-137305>

-S1802 randomizes patients with new diagnoses of metastatic castration sensitive prostate cancer to local therapy (patient choice of radiation or surgery) or no local therapy with the goal of understanding whether local therapy improves outcomes for patients with metastatic disease.

-NRG GU 009 and 010 involves using the Decipher score for patients with unfavorable intermediate and high risk localized prostate cancer, respectively, to intensify or deintensify ADT administered with radiation.

-NRG GU 013 compares SBRT to standard fractionation for high risk localized prostate cancer.

-MK5684-004 compares a novel androgen pathway signaling inhibitor to either abiraterone or enzalutamide in patients with metastatic castration resistant prostate cancer and prior treatment with an androgen pathway signaling inhibitor.

-The Oncology Clinical Trials team also plans to open MODERN, which evaluates whether circulating tumor cells can predict which patients with muscle invasive bladder cancer benefit from adjuvant immunotherapy

Upcoming Events

Developments in Ureteroscopic Stone Treatment (DUST) Symposium,

Dates: 8/14-8/16/25

Location: Chicago

For more information: <https://dustcme.com/>

Annual KP SCAL Urology Symposium,

Dates: 8/29-8/30/25

Location: Ranch Palos Verdes

For more information: [Urology Save the Date 8-29-25](#)

Western Section American Urological Association Annual Meeting

Dates: 11/2-11/6/25

Location: Meritage Resort Napa Valley

For more information: <https://wsaua.org/meetings/>

Society of Urologic Oncology Annual Meeting

Dates: 12/2-12/5/25

Location: Phoenix

For more information: [Upcoming Meetings :: Society of Urologic Oncology](#)

GU ASCO, San Francisco

Dates: 2/26-2/28/26

Location: San Francisco

For more information: [Attend | ASCO Genitourinary Cancers Symposium](#)

North American Robotic Urology Symposium

Dates: 2/26-2/28/26

Location: Las Vegas

For more information: [North American Robotic Urology Symposium](#)

Internal Funding & Research Resources



General Funding Opportunities



Delivery Science and Applied Research



Specialty Research Networks



Getting Started with Research



Division of Research



Delivery Science
and Applied Research

The Permanente Medical Group

Active Research Projects and Collaborations

Determining the concordance of actual compared with guideline-recommended deintensification of cancer surveillance in patients with low and intermediate-risk non-muscle invasive bladder cancer

Michael Shulman, Marilyn Kwan | Targeted Analysis Program | Ongoing

Impact of a population health program on bone health and fracture risk in prostate cancer patients treated with androgen deprivation therapy

Michael Shulman | Rapid Analytics Unit | Ongoing

Impact of structured reporting of incidental renal masses found on cross sectional imaging and ultrasound

Jay Belani, Andy Avins | Rapid Analytics Unit | Ongoing

Optimizing Prostate Biopsy in Men with Mildly Elevated PSA Levels or Prior Negative Biopsies

Joseph Presti | Garfield Memorial Fund | Ongoing

Improving antibiotic selection for urinary tract infection in the ambulatory setting

William Tu | Rapid Analytics Unit | Ongoing

Improving Multidisciplinary Care for Patients with Muscle Invasive Bladder Cancer

Andrea Harzstark, Marilyn Kwan | Delivery Science Grants Program | Ongoing

Development and Validation of the Kaiser Permanente Active Surveillance Assessment (KPASA) Calculator

Joseph Presti, Andy Avins | Delivery Science Grants Program | 7/1/25-6/30/27

Pivotal Study of the Sonomotion Break Wave System for the Comminution of Urinary Tract Stones

Helena Chang | Other | Ongoing

Precision Prostate Cancer Screening with Genetically Adjusted Prostate-Specific Antigen levels

Joseph Presti | NIH R0-1 | 4/1/25-3/31/30

Recent Peer Reviewed Urology - Authored Publications in 2024

*KPNC authors listed in alphabetical order below. For details on author order, click on the link included to the PubMed Abstract.

A Modern Education Theory Approach to Development of a Benchtop Simulation Model for Ultrasound-Guided Percutaneous Nephrolithotomy

Authors: Chang, Helena C | Journal Of Endourology | December 24, 2024 | [PubMed abstract](#)

Perioperative nivolumab versus observation in patients with renal cell carcinoma undergoing nephrectomy (PROSPER ECOG-ACRIN EA8143): an open-label, randomised, phase 3 study

Authors: Ramaswamy, Krishna A | The Lancet. Oncology | June 25, 2024 | [PubMed abstract](#)

Prospective Evaluation of the Kaiser Permanente Prostate Cancer Risk Calculator in Biopsy-Naive Men with Mild PSA Elevations

Authors: Alexeeff, Stacey; Avins, Andrew L; Horton, Brandon H; Prausnitz, Stephanie; Presti, Joseph C | Urology Practice | June 14, 2024 | [PubMed abstract](#)

The Influence of Dietary Isothiocyanates on the Effectiveness of Mitomycin C and Bacillus Calmette-Guerin in Treating Nonmuscle-Invasive Bladder Cancer

Authors: Aaronson, David S; Ergas, Isaac J; Kushi, Larry; Kwan, Marilyn L; Lee, Valerie S; Quesenberry, Charles P; Roh, Janise M | The Journal Of Urology | June 7, 2024 | [PubMed abstract](#)

Primary Palliative Care in Urology: Quality Improvement Summit 2021-2022

Authors: Filippou, Pauline L | Urology Practice | May 1, 2024 | [PubMed abstract](#)

Modifying Effects of Genetic Variations on the Association Between Dietary Isothiocyanate Exposure and Non-muscle Invasive Bladder Cancer Prognosis in the Be-Well Study

Authors: Aaronson, David S; Ergas, Isaac J; Kushi, Larry; Kwan, Marilyn L; Lee, Valerie S; Quesenberry, Charles P; Roh, Janise M | Molecular Nutrition & Food Research | April 1, 2024 | [PubMed abstract](#)